



# *2012 Air Ivanhoe Bear Hunts*

*Season Starts August 15, 2012*

<p><b>Packages and inclusions ...</b></p> <p><b>7 Day Hunts ...</b></p>	<p>Self Guided, Self Baited, Self Accommodated Hunt for \$399 Canadian / hunter (including camping fees for non-residents of Canada)</p>	<p>Fly-in Self Guided Outpost Hunts (see Fly-In Outpost Fishing or Fly-In Moose Hunting Rates) <a href="http://www.Airlvanhoe.com">www.Airlvanhoe.com</a></p>	<p>Fully Guided, Fully Baited, Fully Accommodated Main Lodge Guided Hunt for \$1300 Canadian / hunter</p>
<p><b>Access to properties for up to a full day 7 days of hunting. 251,059 Acres of exclusive bear hunting territory possessed by Air Ivanhoe</b></p>	<p>Exclusive access to one or more of the large properties for each hunting party. Hunters can stay additional weeks at a rate of \$99 / hunter per week.</p>	<p>Exclusive access to the properties accessible from the water body.</p>	<p>Exclusive access to multiple properties which are baited by the guides prior to the arrival of guests.</p>
<p><b>Trophy Fees</b></p>	<p>NONE</p>	<p>NONE</p>	<p>NONE</p>
<p><b>Accommodations</b></p>	<p>Hunters are responsible to provide their own accommodations (tents / trailers / RVs) or can choose to rent accommodations at the Ivanhoe River Inn at an additional nightly rate of: Single \$80 / person / night Double \$60 / person / night As 3/4 \$50 / person / night (10% discount for +4 days)</p>	<p>Hunters are accommodated at our fly-in outpost camps at fishing rates</p>	<p>Hunters are accommodated at the Ivanhoe River Inn in our cottages or suites depending on the party size. All units have full bathrooms, full kitchens, wireless internet, and satellite TV.</p>
<p><b>Transportation</b></p>	<p>Guests provide their own transportation. I.e. trucks, ATVs, Argo's etc.</p>	<p>Boats, Motors, and Fuel are all provided in Fly-In Outpost Fishing Packages</p>	<p>We provide all motorized vehicle transportation and associated fuel I.e. trucks, ATVs, and boats and motors.</p>
<p><b>Baiting</b></p>	<p>None. Guests can prearrange baiting at an additional fee based on the distance to bait sites from Air Ivanhoe's main lodge, the number of bait sites, the number of times baited, and whether trail camera's are involved (supplied, or provided).</p>	<p>None. Fly in baiting is prohibitively expensive. If fishing guests are present at camp prior to the bear hunting guests, Air Ivanhoe can attempt to organize a select location (or two) to have all food scraps and fish guts dumped.</p>	<p>Baiting for at least a month before hunters arrive at the lodge. We like to bait every third day for the first few weeks, and every day for the last week before hunters arrive. We employ a dozen digital trail cameras to ensure our hunters have excellent opportunities to harvest large mature bears. <a href="http://www.OntarioSportsman.com">www.OntarioSportsman.com</a></p>

<b>Tree stands</b>	Hunters are responsible for their own tree stands.	Hunters are responsible for their own tree stands.	All tree stands are provided. Air Ivanhoe uses a half dozen permanent platform stands, two dozen big buddy double ladder tree stands, and a half dozen Ameristep portable ground blinds for our hunters with difficulties or fears of climbing into tree stands.
<b>Retrieving the bears from the woods, gutting the bear, skinning the bear, and quartering the bear</b>	Hunter responsibilities	Hunter responsibilities	Guide responsibilities: These tasks are included with the fees for our fully guided bear hunt from Ivanhoe's main lodge.
<b>Food</b>	Hunter responsibilities	Hunter responsibilities	Hunter responsibilities, but meals can be purchased from the restaurant at the Ivanhoe River Inn (or from the restaurant in Foleyet, which is about 4 miles away from the lodge). Groceries can also be purchased for cooking at the main lodge or in a general store in Foleyet.
<b>Additional Costs</b>	Bear Hunting Licence (\$219 for non residents), optional fishing licence (\$29 – \$50 for an 8 day licence depending on the number of fish sought to be kept by the angler), a temporary firearm registration fee of \$25 per hunter (unless hunters choose to hunt with archery equipment, in which case there is no firearm fee), and a CITES Export permit of \$35 for successful bear hunters bringing their bear across the US / Canada international border.	Bear Hunting Licence, optional fishing licence, optional firearm registration, and potential export permit. A \$420 charter fee will be charged if the bear needs to be flown out of the bush prior to the scheduled departure date *(due to spoiling concerns) OR if an additional flight is required on the departure date because of the additional size / bulk of the animal. If the animal can fly on the groups scheduled departure date and does not overload the aircraft or require additional flights, there is no charter fee for flying the bear out.	Bear Hunting Licence, optional fishing licence, optional firearm registration, and potential export permit. Hunters also have an optional boat and motor package for \$220 per hunter for a boat, motor, unlimited fuel, live bait, and cooler ice for the boat.

<b>Butchering</b>	Hunter Responsibility	Hunter Responsibility	Guide responsibility to gut, skin, and quarter the animal included in fully guided hunt fee. Once quartered, hunters have the option of placing the quarters into the freezer to take them home to a butcher, or to finish the butchering into steaks and burger themselves while at the main lodge. Air Ivanhoe does provide any necessary butchering tools, knives, and paper.
<b>Transportation to the Main Lodge to start the trip</b>	Hunter Responsibility	Hunter Responsibility	Hunter Responsibility
<b>Weapons</b>	Hunter Responsibility	Hunter Responsibility	Hunter Responsibility

**Additional Hunting Opportunities:** The bear hunting season starts on August 15, 2012 and runs until October 31, 2012. Our preferred baiting season is within the first month of the season to allow us to hunt near the blueberry and raspberry patches, using them like giant food plots. Rabbit season opens September 1<sup>st</sup>. Partridge season opens September 15<sup>th</sup>. Rabbit and partridge can be hunted with a seasonal small game licence which for non-residents costs \$109.63. Duck season opens September 10<sup>th</sup> and a duck stamp can be purchased for under \$20 from the local Post Office. Wolf season opens September 15<sup>th</sup> and a non-resident licence can be purchased over the counter for \$263.63. To hunt either wolf or duck in Ontario, you must also purchase a small game licence. Archery moose hunting generally starts mid September and rifle moose hunting is mid October. We also hunt an area much further north from our main lodge in Foleyet which has a rifle season for moose starting mid September. A non-resident moose licence costs \$438.28 and allows hunters to harvest a calf. A Cow or bull tag can be attached to your licence by an Ontario outfitter. Air Ivanhoe is annually allocated adult cow and bull tags. There is no non-resident lottery in Ontario for moose.

**Weapons:** Hunters can use a rifle, shotgun, or a bow (or both a gun and a bow at the same time).

**Transportation to the Main Lodge:** Hunters are responsible to get themselves to the main lodge to commence their trip. Most of our guests will drive to our lodge. Its paved roads to our main drive in lodge. For guests seeking to fly to our lodge (rather than drive), we would suggest flying to Toronto, Ontario and then flying to Timmins, Ontario. From Timmins, we can arrange to have a taxi shuttle bring across your party (up to 6 in the group) for \$150 total each way. For example, with two hunters in the group, their round trip transportation via taxi on the last 110 km (70 miles) would be \$150 each, or as a party of 6, transportation from Timmins to Ivanhoe lake would cost \$50 each.

We would also suggest guests review the option of flying to Toronto, and then taking a Via Rail train directly to Foleyet ([www.viarail.ca](http://www.viarail.ca)). Foleyet is 6 minutes away from the main lodge, and we pick up guests free of charge from Foleyet. It is about an 11 hour train ride from Union Station (downtown

Toronto) to Foleyet. The train has a full restaurant and bar, and will expose travellers to a remote section of Ontario that is inaccessible by car or truck.

Alternatively, we would suggest flying to Detroit, Michigan, then to Sault Saint Marie, Michigan and from there renting a vehicle to drive the remaining 400km (or 250 miles). It's about a 4 hour drive from Sault Sainte Marie, Michigan to Foleyet, Ontario.



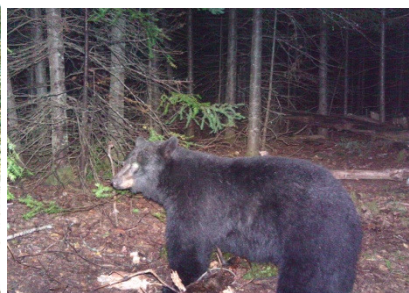
Stealth Cam

067 F

09-01-2010 16:14:02



08/25/09 06:39 PM JT



Stealth Cam

051 F

09-13-2010 22:32:15



08/25/09 06:35 PM 010

For more trail camera pictures, hunter pictures, and information please contact us at:

[www.OntarioSportsman.com](http://www.OntarioSportsman.com) ; [www.Airlvanhoe.com](http://www.Airlvanhoe.com)

Email [info@airivanhoe.com](mailto:info@airivanhoe.com) ; Phone 1-800-955-2951